

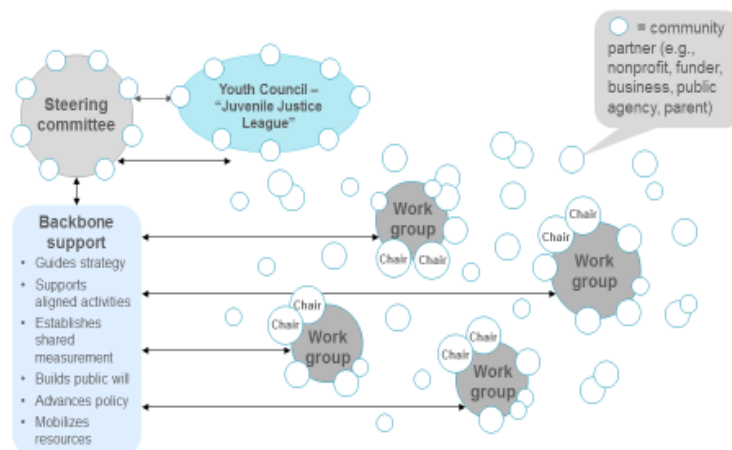


OPERATION YOUTH SUCCESS

VISION STATEMENT: Across Douglas County, our vision is a comprehensive, coordinated, and community-wide approach to juvenile services that eliminates the need for youth involvement with our justice system while maintaining public safety.

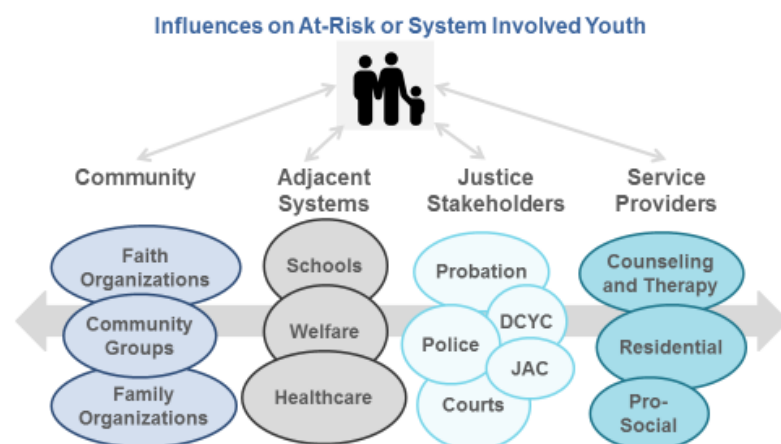
For all youth who do enter our justice system, our goals are to provide effective, compassionate and individualized support that empowers youth and their families to succeed and to build an environment of mutual trust and accountability.

Non-hierarchical, inclusive, and coordinated structures will execute our vision and goals



* Adapted from *Listening to the Stars: The Constellation Model of Collaborative Social Change*, by Tonja Surman and Mark Surman, 2008.

Working groups are cross-sector, representing the juvenile justice system and adjacent systems



Where are we now?

Douglas County Stakeholder Quotes (April 2015)

- "Investment in **collective impact structures** – especially the **backbone** – will ensure success"
- "The level **community voice** is unprecedented"
- "CI has allowed diverse stakeholders to build on what's working to achieve a **common goal**"
- "The **diversity of people at the table** has allowed me to make connections and work with others in new ways"

SUCCESS FACTORS

- Building critical **structures**, including establishing a **backbone**
- Engaging the **community**
- Developing a **shared vision** for change (i.e., common agenda)
- Working together differently** for the long-term

Working groups are critical to driving and sustaining momentum

Working groups play critical roles in making the implementation of this work different

Working group responsibilities:

1. Discuss research on what's already working in Douglas County and nationally.
2. Determine what actions our WG should take to support the overall vision:
 - Learning through a pilot
 - Increasing coordination
 - Enhancing services
 - Advocating for policy
3. Identify resources
4. Determine how we will measure our progress and success
5. Coordinate actions between Working Groups, the Steering Committee, and the Juvenile Justice League.

How this work should feel different:

- Meetings should be structured, dynamic, and well facilitated
- You should be connecting and building trust with people beyond the "usual suspects" you work with on a day to day basis
- You should feel a sense of momentum, accomplishment, and solving problems in new ways (both in terms of short term quick wins and longer term systems changing strategies)

Families working group update

FOCUS AREAS

- To empower and effectively engage families the families WG seeks to:
1. Increase **trust, respect, and understanding** between families and system professionals
 2. Help families **understand** the system and develop processes for **engagement**
 3. Improve **coordination** between all of the system professionals and community providers that provide services to families
 4. Provide **access to appropriate services** to youth and families

STARTING POINT

- Develop an orientation process for system involved youth and families
- Customize this orientation process for youth at DCYC vs. those that are street released
- Determine how to "humanize" orientation (i.e., introduce a peer navigator)

BURNING ISSUE

- Scoping / boundary setting

Prevention working group update

FOCUS AREAS

WG goal: to prevent youth from entering and re-entering the justice system. To do so, we will act to increase earlier recognition of at risk youth and families, knowledge of how to best serve youth and their families, and access to needed supports and services.

Our three focus areas are:

1. Address **barriers** that prevent youth and families from seeking and accessing services
2. Build system professionals' **knowledge and capacity** to better identify and serve at risk youth and families
3. Increase **funding** for preventative community supports and services

STARTING POINT

- Understand the evidence base for peer navigators for prevention
- Conduct a landscape analysis to understand current gaps in prevention services
- Determine current funding streams, funding gaps, untapped funding, and a cost / benefit analysis

BURNING ISSUE

- TRAUMA

Schools working group update

FOCUS AREAS

1. **Reducing absenteeism:** reducing direct system involvement (truancy) and the risk factor for future delinquency
2. **Reducing the need for school-based arrests:** reducing youth entering the system directly from school and addressing symptoms of the broader school to prison pipeline
3. **Improving outcomes related to school re-entry:** addressing challenges youth face readjusting to the school environment or academic demands

STARTING POINTS

- Promote engagement between schools, public agencies, and community organizations that receive attendance-related referrals, to more actively and effectively partner with each other and the families they serve.
- Train school staff, and increase coordination between schools and community and public services, supporting the increase in alternatives to suspensions and law enforcement involvement
- Promote continuity of student education while out of home school.

BURNING ISSUE

- **Coordination:** How can we build on existing state and local models / bright spots?

How can you stay informed and get involved?

- 1) Operation Youth Success Website: www.operationyouthsuccess.org
- 2) "Like" the Operation Youth Success mySidewalk page at <http://operationyouthsuccess.mysidewalk.com/>
- 3) Become a work group member: Applications are available at each break out table
- 4) Contact:
 - Janeé Pannkuk, Operation Youth Success Executive Director at jane.pannkuk@douglascounty-ne.gov
 - Amber Parker, Operation Youth Success Program Manager at amber.parker@douglascounty-ne.gov
 - Shelly Hug, Juvenile Detention Alternative Initiative Coordinator at michelle.hug@Nebraska.gov

Juvenile Detention Alternatives Initiative Vision and Goal

JDAI's vision is to change the odds for court involved youth, aiming to increase their chances of **growing out of delinquent behavior** and leading **healthy, productive lives**. In return, the hope is by changing these odds **fewer youth** will graduate to criminal behavior as adults, travel deeper into substance abusing patterns, and rely less on public assistance.

Through this successful initiative, we all benefit through improved **public safety**, strong labor force, intact and self-supporting **families** and **less government spending** on corrections, public health, etc.

Alternatives to Detention

- To create Alternatives to Detention that will allow for youth to remain placed in their own home or a home setting while providing services that will support the youth and family in crisis. The specific alternatives to be created will include (but may not be limited to): In-home crisis response, Emergency Respite Care, Community Coaching and Intensive Family Preservation. This ATD working group will explore community programs for expansion of services in Douglas County.
- Increase participation in this working group by ATD providers, Probation Intake Staff and community stakeholders to ensure Collaboration and information sharing. This increased participation and information sharing will lend to increase the effectiveness of services to youth as called for in the Community Plan. This Collaboration will also increase the knowledge of available alternatives in the Douglas County Alternatives to Detention Continuum allowing for increased opportunity for youth and families to participate in services that are best practice in the Juvenile Justice field.
- Increase utilization of ATD's by youth who, based on their RAI, are to be released with an appropriate alternative as opposed to utilizing detention. Decrease the number of youth unnecessarily or inappropriately detained due to lack of appropriate alternatives. Decrease the number of youth placed out of the family home through utilization of community based Alternatives.

CASE PROCESSING

- Utilize core JDAI strategies to restructure policy and practice to create system improvements as called for by the Community Plan. This working group will work to improve the detention hearing process for youth in the Juvenile Justice system as called for by Anne E Casey and JDAI.
- This working group will aim to improve the Juvenile Justice system overall by utilizing Pre-detention staffing calls with all parties to assist in developing a plan for the youth to avoid delays in obtaining needed services.
- This working group aims to create a Standardized Detention Information form to improve overall system performance and decrease case processing time through collaboration of parties.
- Review local court rules regarding standardizing case processing timelines, in particular to review hearings related to youth placed out of home. Utilize core JDAI strategies in this effort as called for by the Community Plan.
- Revisit local court rules and practice regarding the issuance of warrants. Ensure collaboration between all legal parties and Juvenile Probation to ensure the greatest collective impact as called for in the Community Plan.

DATA

- Develop procedure for the accurate collection of data to ensure that reports (monthly, quarterly, annually) are submitted on-time with true information.
- Review and analyze data and to provide an avenue for data requests from JDAI/OYS working groups. To identify relevant data related to the target population of Douglas County and offer strategies to assist working groups in safely reducing the use of secure detention.
- To provide a place of central information sharing as indicated in the Community Plan and to provide this information through a Collaborative approach to ensure a collective impact response to information exchange by supporting the working groups of JDAI.
- To review data in regards to the identified priority areas of the JDAI Collaborative.
- To propose and undertake evaluative efforts that will inform strategies to reduce rates of detention in Douglas County.

EQUITY – DISPROPORTIONATE MINORITY CONTACT

- To review and analyze data related to minority youth in Douglas County and develop strategies and make recommendations to reduce and eventually eliminate issues of Disproportionate Minority Contact within the target populations that have been identified as indicated by the Community Plan.
- To utilize the Collaborative approach and the use of data to determine effects of system related response on youth of color in Douglas County. The DMC group will, through the use of data, identify appropriate Alternatives to Detention for minority youth populations to be created within the community that the youth resides.
- To increase community awareness of issues surrounding DMC and to create a community survey to understand the warrant population in Douglas County. The DMC group also aims to increase family engagement in the Juvenile Justice System. The DMC group aims to engage affected populations and stakeholders. The DMC group also aims to assist parents/caregivers resolve conflict that often contribute to the youth leaving home.

OBJECTIVE ADMISSION

- The Objective Admission group will review the Risk Assessment Instrument utilized by Juvenile Probation to ensure its legitimacy for use across Douglas County. An Objective RAI lends to the decrease in DMC and works in alignment with core JDAI Principles

Juvenile Detention Alternatives Initiative's Core Strategies and Best Practices Matrix

CORE STRATEGIES	BEST PRACTICES; SAMPLE REFORMS	TOOLS & RESOURCES	RELATED RESULTS
Collaboration	-JDAI steering & sub committees -JDAI coordinator -Work plans	-Fundamentals training -Pathways 1 -Pathways 2 -Model sites -Helpdesk	-All impact results -Influence -Leverage
Use of Data	-Daily population counts -Quarterly reports -Annual results report -System assessment	-Pathways 1 -Pathways 7 -QRIS training -Results Reports -DUS Handbook -Helpdesk	-All impact results -Influence
Objective Omissions	-Detention admissions criteria -Risk assessment -Risk assessment validation -24/7 screening -Juvenile detention risk assessment monitoring	-Pathways 3 -Practice Guide #1 -RAI training -Model sites -Helpdesk	-Admissions -FTA rate -Re-arrest rate -RED reductions
Alternative to Detention Programming	-Home detention -Day/evening reporting center -Electronic Monitoring/GPS -Shelter/foster care beds -Reception Center -Placement Coordination	-Pathways 4 -Model sites -Fundamentals training -Helpdesk	-ADP -FTA rate -Re-arrest rate -RED reductions -Commitments/placements
Expedited Case Processing	-"Speedy trial" rules -Expeditors -Weekly detention & daily case reviews -Early screening/assignments	-Pathways 5 -Model sites -Fundamentals training -Helpdesk	-Average length of stay (LOS) -Distribution of LOS -FTA rate -Re-arrest rate
Reducing Racial & Ethnic Disparities	-Community engagement -Special detention case reforms	-Pathways 8 -RED training -Model sites -Helpdesk	-All YOC impact indicators -Additional metrics -Influence -Leverage